

LRHA UPDATE

NOVEMBER 2008, VOLUME XV, ISSUE XI

Partial funding for this publication is provided through a federal grant from the Office of Rural Health Policy (HRSA) and the Louisiana Department of Health and Hospitals Bureau of Primary Care and Rural Health

LRHA MISSION STATEMENT:

To serve as a unified voice for the promotion of rural healthcare through advocacy, education, and leadership.



BOARD OF DIRECTORS

*Christopher Vidrine
President*

504-568-8976

*Christopher Williams
President Elect*

225-926-6353

*Wayne Arboneaux
Treasurer*

985-369-3600

*Rebecca Bradley
Secretary*

225-928-0026

*Sam Fulton
Immediate Past President*

337-239-5113

Milton Bourgeois, Ex Officio

Byron Briggs, Ex Officio

Mark Chustz

Jim Dixon

Linda Deville

Brad Fife

Dr. Arthur Fort, Ex Officio

Nick Gachassin Jr., Ex Officio

Paul Landry, Ex Officio

Suzanne Lavergne, Ex Officio

Garrett Lejeune

Scott Barrilleaux

Kristy Nichols, Ex Officio

Evalyn Ormond

Lee Ann Albert

Scott Stafford, Ex Officio

Vernon Stevens

Not too Late to Register!!

2008 Annual Fall Conference
December 15-16, 2008
Hilton Lafayette Towers
Lafayette, LA



**Click here for more information
and for the registration form**

LOUISIANA RURAL HEALTH ASSOCIATION
POST OFFICE BOX 387—NAPOLEONVILLE, LA 70390
PHONE: (985) 369-3813 FAX: (985) 369-3630 WEB: WWW.LRHA.ORG

A view from the field...

*Dear Members, Colleagues, and
Healthcare Leaders,*



I would like to thank you for your support and dedication to the Louisiana Rural Health Association as well as for your commitment to improving the health of the people in rural Louisiana. As we look forward to an action packed New Year, we would like to invite you to renew your LRHA membership dues for 2009. The 2009 membership drive kickoff is underway and you will receive your renewal invitation soon! Our members are our greatest strength and we thank you for contributing to the success of LRHA!

As we close out 2008, we have prepared an excellent agenda for the 2008 Annual Rural Health Care Conference. I'm confident that this is one you don't want to miss. **The conference will be held on December 15-16, 2008 at the Lafayette Hilton. Make your hotel reservations before November 30th [Register Today!](#)**

I would also like to take this time to congratulate and recognize the 2009 Board of Directors slate of candidates.

- * David Jones, CEO North Caddo Medical Center
- * Roderick Campbell, CEO Iberia Comprehensive Community Health Center
- * Health Veuleman, Director of Clinics at LaSalle General Hospital
- * Mary Ellen Pratt, CEO St. James Parish Hospital

The 2009 Board of Directors election will be held in conjunction with the LRHA Annual Rural Health Conference. All members in attendance will have an opportunity to cast their vote.

I hope you and your family had a wonderful Thanksgiving! Thanksgiving is a special time of the year as it is a time to reflect upon the blessings enjoyed throughout the year as well as a time to give thanks.

We're looking forward to seeing everyone at the 2008 Annual Rural Health Care Conference!

Sincerely,

*Stacy Fontenot
Executive Director*

From the Diamond Corner...

10 Reasons to Love a Health Savings Account (HSA)

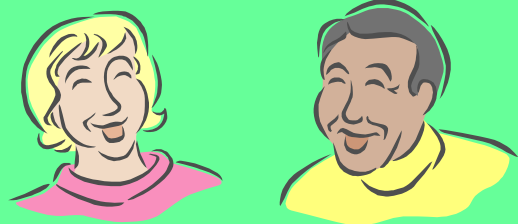


Click her to read article

 **MCNEARY**

A
STEP
AHEAD

*Brad Fife, Vice President
Paul Waguespack, Vice President
4212 American Way, Ste. B
Baton Rouge, LA 70816
Phone: (225) 291-6363
Web: <http://www.mcneary.com/>*



**Submit to the LRHA Update,
We would love to hear from you!**

Send articles to,
arboneaux@lrha.org

*A Message from the
American Heart
Association®*



Learn and LiveSM



Brown Named New CEO

Nancy Brown has been named the next Chief Executive Officer of the American Heart Association, effective January 1, 2009. Brown is the first female CEO in the history of the association. She succeeds Cass Wheeler, who has served as CEO of the association for 11 years.

Hospital-owned Rural Health Clinics Excluded from UCC by CMS

The Centers for Medicare & Medicaid Services (CMS) issued the final rule 42 CFR Part 440 [CMS-2213-F] *Clarification of Outpatient Hospital Facility (Including Outpatient Hospital Clinic) Services Definition*. This final rule is in response to CMS proposed rule CMS-2213-P, *Medicaid Program; Clarification of Outpatient Clinic and Hospital Facility Services Definition and Upper Payment Limit* (Vol. 72, No. 188) Sept. 28, 2007. In the final rule, CMS moves to align the Medicaid definition of outpatient hospital services more closely to the Medicare definition in order to bring greater consistency between the programs. In doing this, CMS has excluded hospital-owned rural health clinics (RHCs) from being eligible for the calculation of uncompensated care (UCC) dollars. CMS specifically states in the rule that, “unless the services provided in the RHCs meet the new definition of Medicaid outpatient hospital services, the services provided in the RHCs could no longer be recognized as outpatient hospital services.” As of today, the final rule has not been posted to the *Federal Register*, but implementation will take place 30 days after formal posting.

Heart360™ Cardiovascular Wellness Center

WHAT AFFECTS YOUR HEART HEALTH?

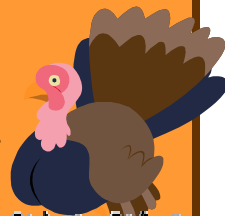
- Do you have high blood pressure or a family history of high blood pressure?
- Are you physically active?
- Do you know what your cholesterol levels are?
- Do you have a family history of high cholesterol?
- Do you have diabetes or have a family history of diabetes?
- Are you overweight?
- What medications are you taking?

**Sign in to use our trackers to
help reduce your risk of
cardiovascular disease**



Click here to sign up!

**HAPPY
THANKSGIVING**





On November 14, 2008, Governor Bobby Jindal and DHH Secretary Alan Levine announced details on "Louisiana Health First," an initiative to improve health outcomes in Louisiana and create a sustainable system of quality health care in the state.

The initiative focuses on:

- expanding health insurance coverage in the state,
- offering Medicaid recipients choices on coverage and benefits,
- reducing fraud and system abuse,
- ensuring that providers are more involved in patient care,
- making the new charity hospital a competitive academic institution, and increasing transparency in the Medicaid system by making performance measures available on the Internet, 24 hours-a-day.

The LRHA encourages you to read the Louisiana First Health White Paper for more details. Louisiana Health First could be providing services as early as 2010, pending approval by the Louisiana Legislature and the Federal Centers for Medicare and Medicaid Services.



Click here for more information on Louisiana Health First

HIV in Primary Care

A half-day program designed to provide basic HIV knowledge in regards to risk assessment and identification, testing, perinatal transmission and community resources



**CLICK HERE FOR
REGISTRTION FORM**



It's hard to believe that this school year is almost half way through. The program is off to a great start and the students seem to really love the lessons. Students were given a screening at the beginning of this school year to determine their height, weight, and blood pressure. This went along with Module 1, which was an introduction into the Growing Up Fit program and it seemed to go really well. The next module was an introduction to the food pyramid. This lesson was great. It provided student/coordinator interaction. To date, all seven school have completed the screenings, Module 1, and Module 2. When students return from the Thanksgiving holidays, Module 3 will begin. If you would like more information about the program, please contact:

Lynne Arboneaux

985-369-3813 ext.02

PEAL Corner

Social Security Announces 5.8 Percent Benefit Increase for 2009

Monthly Social Security and Supplemental Security Income benefits for more than 55 million Americans will increase 5.8 percent in 2009, the Social Security Administration announced today. The 5.8 percent increase is the largest since 1982.

Social Security and Supplemental Security Income benefits increase automatically each year based on the rise in the Bureau of Labor Statistics' *Consumer Price Index for Urban Wage Earners and Clerical Workers* (CPI-W), from the third quarter of the prior year to the corresponding period of the current year. This year's increase in the CPI-W was 5.8 percent.

The 5.8 percent Cost-of-Living Adjustment (COLA) will begin with benefits that over 50 million Social Security beneficiaries receive in January 2009. Increased payments to more than 7 million Supplemental Security Income beneficiaries will begin on December 31.

Some other changes that take effect in January of each year are based on the increase in average wages. Based on that increase, the maximum amount of earnings subject to the Social Security tax (taxable maximum) will increase to \$106,800 from \$102,000. Of the estimated 164 million workers who will pay Social Security taxes in 2009, about 11 million will pay higher taxes as a result of the increase in the taxable maximum.

Information about Medicare changes for 2009 can be found at www.medicare.gov.

MEDICARE'S ONLINE TOOLS WILL HELP BENEFICIARIES WITH PRESCRIPTION DRUG AND HEALTH PLAN CHOICES FOR 2009



Read article here

Need help with Medicare Part D?



**Call the LRHA office
and speak with:**

Anne Marsh

**(985) 369-3813
ext.04**

[Click here for fact sheet](#)



Upcoming Events:

2009 LRHA Rural Health Clinic Event

April 6, 2009
Baton Rouge Marriott

2009 LRHA Spring Conference

April 7, 2009
Baton Rouge Marriott

If you have any events that you would like to post an issue of the LRHA Update please contact Lynne Arboneaux at arboneaux@lrha.org.

LRHA Awarded Community Based Rural Health Program Grant from LA Department of Health and Hospitals

On Tuesday, November 18, 2008 the LA DHH announced the awarding of 14 grants of up to \$75,000 to health care providers in rural and medically underserved areas in the state for community health care service expansion projects. The LRHA is pleased to announce that we have been selected as one of the 14 award recipients. The primary purpose of our grant project entitled - *Health Status Improvement Project* - is to expand programs in Iberville Parish that incorporate a seamless system of care to include mental health and obesity intervention at the same time working towards a medical home system of care. Additionally, the project will focus on enhancing and expanding the capacity of the existing Medicare Prescription Assistance outreach efforts to include education on Medicare preventive services, chronic disease management, nutrition, and smoking cessation. The grants were awarded through the Bureau of Primary Care and Rural Health's Community-based and Rural Health Program. Congratulations to all award recipients!

**Click here to see official
award announcements
from DHH**



DIAMOND SPONSOR



2008 SPONSORS

McNeary, Inc.

4212 American Way, Suite B
Baton Rouge, LA 70816

Phone: (225) 291-6363

Fax: (225) 291-6335

Web: <http://www.mcneary.com/>

PLATINUM SPONSOR



HSLI

P O Box 40318
Baton Rouge, LA 70835-0318

Phone: (800) 542-4754

Fax: (225) 272-1090

Web: <http://www.hsli.com/>

GOLD SPONSOR



LHC Group

420 West Pinhook Rd., Suite A
Lafayette, LA 70503

Phone: (800) 489-1307

Fax: (337) 235-8037

Web: <http://www.lhcgroup.com/>

BRONZE SPONSORS



North LA AHEC

1513 Doctors Drive, Suite 2
Bossier City, LA 71111

Phone: (318) 746-4644

Fax: (318) 746-4677

Web: <http://www.nlahec.org/>



Correct Care, Inc.

17438 Hard Hat Drive
Covington, La 70435

Phone: (800) 962-3959

Fax: (985) 249-5618

Web: <http://www.correctcareinc.com>